

# Product Bulletin

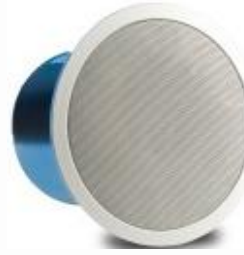
## Manufacturer

Turbosound

## Product

TCS-C50T

High Power Ceiling Speaker



## Product Brief Description

The TCS-C50T is a high quality full range two-way ceiling loudspeaker designed for use in background sound reinforcement applications in a wide range of fixed installations.

It consists of a front loaded 5" bass/mid frequency driver and a 1" ferrofluid-cooled neodymium soft dome tweeter, matched with an internal passive crossover network, in an easy-mount paintable ABS ceiling frame with a perforated mesh grille backed with acoustic cloth.

## Features

## Benefits

• Full range response	• No sub needed
• Wide 180° dispersion	• Fewer speakers required to cover room
• High power handling	• For high SPL applications
• Very Efficient	• Requires less power to achieve SPL goal
• 16 ohms nominal impedance	• Can put 4 speakers on 1 amp channel
• Four quarter-turn fixing tabs	• Easy mounting
• Phoenix-style terminations	• Simplified installation
• Meets safety requirements	• Conforms to BS5839 standards & IEC/EN 60849

## Applications

- Hotels
- Airports
- Bars and clubs
- Retail stores
- Conference rooms
- Restaurants
- Convention Centers
- Courtrooms

## Comparison Matrix

Features/Spec's	Turbo TCS C50T	JBL Control 26C/CT	Atlas FAP 62T	Tannoy CM S501
Sensitivity	92dB half space	89dB half space	88dB half space	89dB half space
Power Handling	75w cont. 150w prog.	75w cont. 140w prog.	50w cont.	50w cont. 100w prog.
Nominal Dispersion	180 degrees	110 degrees	110 degrees	90 degrees
Max SPL	110 cont.	107 cont.	Not listed	106 cont.
Transformer Taps 70v	60, 30, 15, & 7.5w	60, 30, 15, & 7.5w	32, 16, 8, 4, & 2w	30, 15, 7.5, & 3W